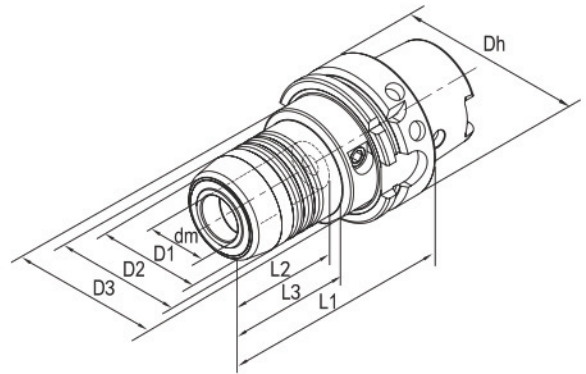


HYDRAULIC EXPANSIONS CHUCK

- Super transmitted torque for high clamping reliability.
- Radial run-out less than 3µ (system accuracy at 4xd)
- For clamping cutting tools with cylindric shank tolerance h6
- Flexible clamping range due to use of reducing sleeve for Various shank.
- Axial length adjustment available and max. adjustment travel 10mm.
- Ideal damping characteristics, resulting in optimum surface finish, increase cutter life time and spindle protection.
- Reducing sleeve, Coolant pipe and coolant pipe Wrench optional.



Order No.	Mode	Shank	Size(mm)									Screw type	Screw Wrench	for Collets
			Dh	dm	D1	D2	D3	L1	L2	L3				
111-01-401	HSK63A-HCM06-70	HSK-A63	63	6	22	26	50	70	37	24	HCS005014C	TS5	-	
111-01-402	HSK63A-HCM08-70	HSK-A63	63	8	24	28	50	70	37	25	HCS006014C	TS5	-	
111-01-403	HSK63A-HCM10-80	HSK-A63	63	10	26	30	50	80	41	35	HCS008014C	TS5	-	
111-01-404	HSK63A-HCM12-85	HSK-A63	63	12	28	32	50	85	46	40	HCS008014C	TS5	HC12	
111-01-405	HSK63A-HCM16-90	HSK-A63	63	16	34	38	50	90	49	46	HCS008014C	TS5	-	
111-01-406	HSK63A-HCM20-90	HSK-A63	63	20	38	42	50	90	51	48	HCS008014C	TS5	HC20	
111-01-407	HSK63A-HCM25-120	HSK-A63	63	25	53	57	63	120	57	59	HCS012014C	TS6	-	
111-01-408	HSK63A-HCM32-125	HSK-A63	63	32	60	64	75	125	61	63	HCS012014C	TS6	HC32	
111-01-409	HSK63A-HCM14-85	HSK-A63	63	14	30	34	50	85	46	40	HCS008014C	TS5	-	
111-01-410	HSK63A-HCM18-90	HSK-A63	63	18	36	40	50	90	49	47	HCS008014C	TS5	-	
111-01-411	HSK63A-HCM06-150	HSK-A63	63	6	22	26	50	150	37	103	HCS005014C	TS5	-	
111-01-412	HSK63A-HCM08-150	HSK-A63	63	8	24	28	50	150	37	104	HCS006014C	TS5	-	
111-01-413	HSK63A-HCM10-150	HSK-A63	63	10	26	30	50	150	41	104	HCS008014C	TS5	-	
111-01-414	HSK63A-HCM12-150	HSK-A63	63	12	28	32	50	150	46	105	HCS008014C	TS5	HC12	
111-01-415	HSK63A-HCM14-150	HSK-A63	63	14	30	34	50	150	46	105	HCS008014C	TS5	-	
111-01-416	HSK63A-HCM16-150	HSK-A63	63	16	34	38	50	150	49	106	HCS008014C	TS5	-	
111-01-417	HSK63A-HCM18-150	HSK-A63	63	18	36	40	50	150	49	107	HCS008014C	TS5	-	
111-01-418	HSK63A-HCM20-150	HSK-A63	63	20	38	42	50	150	51	108	HCS008014C	TS5	HC20	
111-01-419	HSK63A-HCM06-200	HSK-A63	63	6	22	26	50	200	37	153	HCS005014C	TS5	-	
111-01-420	HSK63A-HCM08-200	HSK-A63	63	8	24	28	50	200	37	154	HCS006014C	TS5	-	
111-01-421	HSK63A-HCM10-200	HSK-A63	63	10	26	30	50	200	41	154	HCS008014C	TS5	-	
111-01-422	HSK63A-HCM12-200	HSK-A63	63	12	28	32	50	200	46	155	HCS008014C	TS5	HC12	
111-01-423	HSK63A-HCM14-200	HSK-A63	63	14	30	34	50	200	46	155	HCS008014C	TS5	-	
111-01-424	HSK63A-HCM16-200	HSK-A63	63	16	34	38	50	200	49	156	HCS008014C	TS5	-	
111-01-425	HSK63A-HCM18-200	HSK-A63	63	18	36	40	50	200	49	157	HCS008014C	TS5	-	
111-01-426	HSK63A-HCM20-200	HSK-A63	63	20	38	42	50	200	51	158	HCS008014C	TS5	HC20	
111-01-601	HSK100A-HCM06-75	HSK-A100	100	6	22	26	50	75	37	26	HCS005014C	TS5	-	
111-01-602	HSK100A-HCM08-75	HSK-A100	100	8	24	28	50	75	37	26	HCS006014C	TS5	-	
111-01-603	HSK100A-HCM10-90	HSK-A100	100	10	26	30	50	90	41	42	HCS008014C	TS5	-	
111-01-604	HSK100A-HCM12-95	HSK-A100	100	12	28	32	50	95	46	47	HCS008014C	TS5	HC12	
111-01-605	HSK100A-HCM16-100	HSK-A100	100	16	34	38	50	100	49	53	HCS008014C	TS5	-	
111-01-606	HSK100A-HCM20-105	HSK-A100	100	20	38	42	50	105	51	51	HCS008014C	TS5	HC20	
111-01-607	HSK100A-HCM25-110	HSK-A100	100	25	53	57	63	110	57	62	HCS012014C	TS6	-	
111-01-608	HSK100A-HCM32-110	HSK-A100	100	32	60	64	75	110	61	62	HCS012014C	TS6	HC32	
111-01-609	HSK100A-HCM12-150	HSK-A100	100	12	28	32	50	150	46	102	HCS008014C	TS5	HC12	
111-01-610	HSK100A-HCM20-150	HSK-A100	100	20	38	42	50	150	51	104	HCS008014C	TS5	HC20	

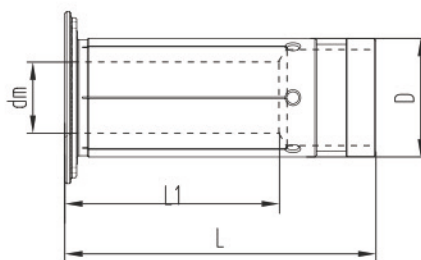
Optional accessories:

	Dh=63	Dh=100
Coolant tubes		
Model	TU-HSK63	TU-HSK100
Order No.	100-00-001	100-00-002

	Dh=63	Dh=100
Coolant tube Wrench		
Model	W-HSK63	W-HSK100
Order No.	100-00-003	100-00-004

REDUCING SLEEVE FOR HYDRAULIC EXPANSIONS CHUCK

- Radial run-out less than 5 μ .
- For clamping cutting tools with cylindric shank tolerance h6.



Order No.	Model	Size (mm)			
		dm	D	L1	L
100-01-001	HC12-3	3	12	16.5	47.5
100-01-002	HC12-4	4	12	16.5	47.5
100-01-003	HC12-5	5	12	16.5	47.5
100-01-004	HC12-6	6	12	24	47.5
100-01-005	HC12-8	8	12	25.5	47.5
100-01-006	HC20-3	3	20	17.5	52.5
100-01-007	HC20-4	4	20	17.5	52.5
100-01-008	HC20-5	5	20	17.5	52.5
100-01-009	HC20-6	6	20	25.5	52.5
100-01-010	HC20-7	7	20	28	52.5
100-01-011	HC20-8	8	20	28	52.5
100-01-012	HC20-9	9	20	32.5	52.5
100-01-013	HC20-10	10	20	32.5	52.5
100-01-014	HC20-11	11	20	36	52.5
100-01-015	HC20-12	12	20	36	52.5
100-01-016	HC20-13	13	20	36.5	52.5
100-01-017	HC20-14	14	20	37	52.5
100-01-018	HC20-15	15	20	37	52.5
100-01-019	HC20-16	16	20	37.5	52.5
100-01-020	HC32-6	6	32	25.5	63.5
100-01-021	HC32-8	8	32	27.5	63.5
100-01-022	HC32-10	10	32	30.5	63.5
100-01-023	HC32-12	12	32	30.5	63.5
100-01-024	HC32-14	14	32	32.5	63.5
100-01-025	HC32-16	16	32	40.5	63.5
100-01-026	HC32-18	18	32	40.5	63.5
100-01-027	HC32-20	20	32	40.5	63.5
100-01-028	HC32-25	25	32	48.5	63.5

HYDRAULIC EXPANSIONS CHUCK SET

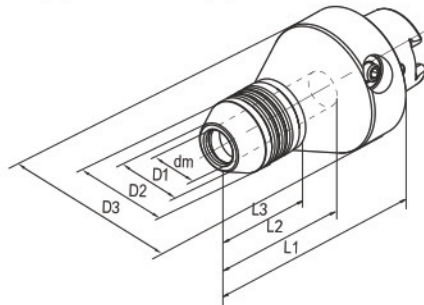
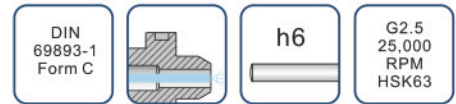
- Each set including 1pc each of HSK63A-HCM20-90 hydraulic expansion chuck, HC20-6, HC20-8, HC20-10, HC20-12, HC20-16 (internal dia: 6, 8, 10, 12, 16mm) reducing sleeves and screw wrench.
- pack in strong aluminium box.



ORDER NO.111-01-S04

PRECISION HYDRAULIC EXPANSIONS CHUCK

- Used on CNC tool grinding machine for grinding/sharpening of drill, reamer, end mill etc.
- High precision and Radial Run-out not more than 2μ at 4d checking point.
- Super transmitted torque for high clamping reliability.
- For clamping cylindrical shank tolerance h6
- Can be operated frequently long time and keep good repeatability.
- Coolant pipe and coolant pipe Wrench optional.



Order No.	Mode	Shank	Size(mm)							Wrench	for Collets
			dm	D1	D2	D3	L1	L2	L3		
111-01-001	HSK63C-HCM12-110M	HSK-C63	12	21.5	36.5	75	110	83	47	TS5	HC12..M
111-01-002	HSK63C-HCM20-110M	HSK-C63	20	28	42	75	110	83	47	TS5	HC20..M
111-01-003	HSK63C-HCM32-110M	HSK-C63	32	40	54	80	110	83	62.5	TS5	HC32..M

Optional accessories:

Coolant tubes	Dh=63	Dh=100
Model	TU-HSK63	TU-HSK100
Order No.	100-00-001	100-00-002

Coolant tube Wrench	Dh=63	Dh=100
Model	W-HSK63	W-HSK100
Order No.	100-00-003	100-00-004

PRECISION REDUCING SLEEVE FOR HYDRAULIC CHUCK

- Radial run-out less than 3μ .
- Used for grinding/sharpening of drill, reamer, end mill etc.
- For clamping cutting tools with cylindrical shank tolerance h6



Order No.	Mode	Size (mm)			
		dm	D	L1	L
100-01-101	HC12-3M	3	12	16.5	47.5
100-01-102	HC12-4M	4	12	16.5	47.5
100-01-103	HC12-5M	5	12	16.5	47.5
100-01-104	HC12-6M	6	12	24	47.5
100-01-105	HC12-8M	8	12	25.5	47.5
100-01-106	HC20-3M	3	20	17.5	52.5
100-01-107	HC20-4M	4	20	17.5	52.5
100-01-108	HC20-5M	5	20	17.5	52.5
100-01-109	HC20-6M	6	20	25.5	52.5
100-01-110	HC20-7M	7	20	28	52.5
100-01-111	HC20-8M	8	20	28	52.5
100-01-112	HC20-9M	9	20	32.5	52.5
100-01-113	HC20-10M	10	20	32.5	52.5
100-01-114	HC20-11M	11	20	36	52.5
100-01-115	HC20-12M	12	20	36	52.5
100-01-116	HC20-13M	13	20	36.5	52.5
100-01-117	HC20-14M	14	20	37	52.5
100-01-118	HC20-15M	15	20	37	52.5
100-01-119	HC20-16M	16	20	37.5	52.5
100-01-120	HC32-6M	6	32	25.5	63.5
100-01-121	HC32-8M	8	32	27.5	63.5
100-01-122	HC32-10M	10	32	30.5	63.5
100-01-123	HC32-12M	12	32	30.5	63.5
100-01-124	HC32-14M	14	32	32.5	63.5
100-01-125	HC32-16M	16	32	40.5	63.5
100-01-126	HC32-18M	18	32	40.5	63.5
100-01-127	HC32-20M	20	32	40.5	63.5
100-01-128	HC32-25M	25	32	48.5	63.5

